

# Improved Cordless Cleaning

## GoFree® Flex Pro

107507\* GoFree Flex Pro w/  
Xover Telescoping Wand Tool Kit D (107100)

**\$1,699**

The enhanced GoFree Flex Pro with new state-of-the-art Lithium Ion battery has approximate 75-minute runtime. This cordless backpack vacuum now cleans 30% faster than a corded backpack and 5x faster than an upright vacuum. Durable, reliable and more comfortable than ever, the GoFree Flex Pro provides ultimate cleaning freedom.



**TIME SAVING**



**CORDLESS**



**SAFETY**



**MANEUVERABLE**



**CLEANING FOR HEALTH**

*\*\*The filtration value of ProTeam's ProLevel Filtration System in this vacuum is achieved by the use of a multi-stage filtration system, including intercept micro filter, micro cloth filter, plastic cage with foam filter, and post-motor filter made from HEPA media, as tested per ASTM 3150.*

### Specifications

Weight:	18 lbs./8.2 kg
Motor Airflow:	78 CFM
Static Lift:	54 in.
Motor:	36 V / 10 A / 360 W
Decibel:	63.7 dBA
Capacity:	6 qt/6.6 L
Battery Type:	Lithium Ion
Approximate Runtime:	75 mins.
Approximate Charge Time:	2.5 - 3 hrs.
Charge Cycles:	up to 850
ProLevel Filtration® w/ Four Levels of Filtration:	1054 sq. in. total area

### \*\*ProLevel Filtration System with HEPA Media

captures 99.87% at 0.3-.5 microns per ASTM 3150

### Warranty

- 2 years motor, battery and charger
- 3 years parts and labor on vacuum
- Limited lifetime on molded body parts

### \*STANDARD CONFIGURATION

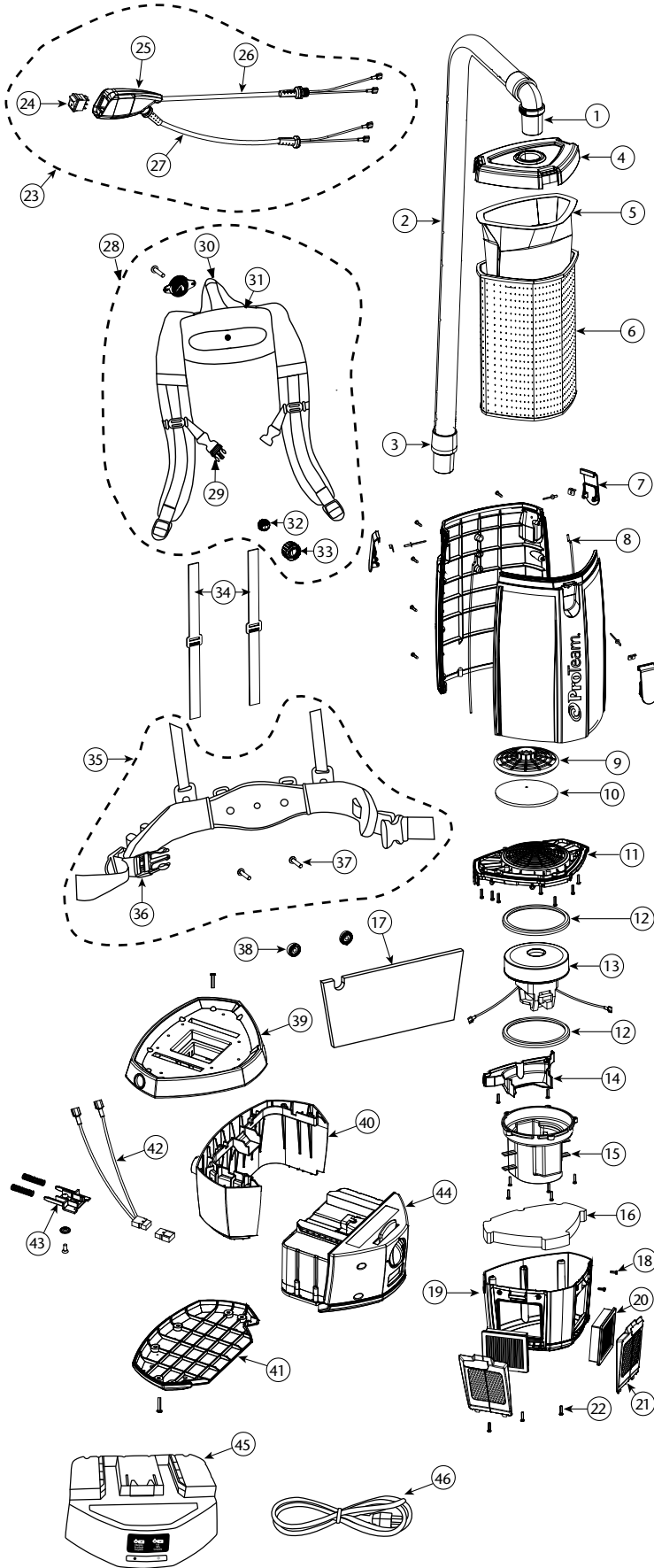
- 14" Xover Floor Tool
- Telescoping Wand
- 5" Upholstery Tool
- 3" Dust Brush
- 17" Crevice Tool

All vacuums purchased in kit configurations include battery and charger.

### OPTIONAL CONFIGURATIONS

107508	w/ Xover® Performance Telescoping Wand Tool Kit C (107099)	\$1,699
107509	w/ Xover Two-Piece Wand Tool Kit B (107098)	1,699
107539	w/ ProBlade® Carpet Floor Tool Kit (107530)	1,699
107540	w/ ProBlade Hard Surface Floor Tool Kit (107531)	1,709
107541	w/ ProBlade Carpet and Hard Surface Floor Tool Kit (107532)	1,749
107513	Replacement Battery	999
107516	Battery Charger	210.94

# GOFREE FLEX PRO PARTS



No.	Product Name	Qty	List Price
1	101928 Replacement Double Swivel Elbow Cuff 1½"	1 ea.	\$ 9.60
	102715 Replacement Double Swivel Elbow Cuff 1¼"	1 ea.	12.72
2	103048 Static-Dissipating Hose w/Cuffs (Black) 1½"	1 ea.	29.04
	103237 Static-Dissipating Hose w/Cuffs (Black) 1¼"	1 ea.	27.75
3	100694 Replacement Swivel Cuff (Black) 1½"	1 ea.	5.71
	103279 Replacement Swivel Cuff (Black) 1¼"	1 ea.	7.09
4	833948 Purple Cap	1 ea.	36.15
5	107314 Intercept Micro Filter (Open Collar)	10/pk	15.60
	107374 Intercept Micro Filter (Closed Collar)	10/pk	21.76
6	834072 Micro Cloth Filter	1 ea.	25.92
7	510179 Latch and Retainer w/Lock Nut & Screw	1 set	7.73
8	510181 Gasket for Tank	2 ea.	3.58
9	510183 Dome Filter w/Foam Media (includes: #10)	1 set	8.35
10	510184 Foam Filter Media for Dome Filter	1 ea.	2.53
11	510193 Upper Motor Support w/Gasket	1 set	5.88
12	840899 Motor Gasket	1 ea.	6.78
13	510411 Motor/Fan (36VDC) w/Gasket	1 ea.	155.82
14	510185 Cover Wire w/ 2 screws	1 set	2.71
15	510194 Lower Motor Support (5 screws)	1 set	13.90
16	834042 Triangular Lower Foam Pad	1 ea.	3.06
17	834043 Rectangular Upper Foam Pad	1 ea.	2.81
18	808380-0 Screw Pan CR #8 x ½"	1 ea.	.90
19	510216 Housing Assembly Lower w/Screws	1 set	16.54
20	107315 Exhaust Filter made from HEPA Media (2 pk)	1 set	12.23
21	841708 Exhaust Filter Door w/ Latch	1 ea.	7.41
22	808380-22 Screw Pan CR #8 x ¾"	1 ea.	1.11
23	834249 Switch Cord and Power Cord Assembly (24-27)	1 set	59.11
24	106066 On/Off Switch	1 ea.	7.57
25	107043 Switch Box	1 set	18.67
26	834250 Pigtail Assembly	1 set	8.59
27	834251 Battery Cord Assembly	1 set	9.86
28	840112 Upper Harness Assembly (includes: #29-33)	1 set	74.81
	840011 Harness Assembly Complete (includes: #28-37)	1 set	160.65
29	103627 Sternum Strap Buckle (latch and keeper)	1 set	2.23
30	101737 Carry Handle w/Rivet Set	1 set	9.05
31	834049 Upper Pad Harness	1 set	27.81
32	834050 Pivoting Ball	1 ea.	2.76
33	834053 Outer Support Retainer	1 ea.	3.17
34	510192 Tensioning Straps	1 set	10.59
35	840114 Lower Harness Assembly (includes: #36, 37)	1 set	75.25
36	510301 Waist Belt Buckles and Straps Set	1 set	12.19
37	834051 5/16" - 18x1 - 3/8" Lock Screw (2 screws)	1 set	5.14
38	510186 Harness Spacers	2 ea.	3.26
39	510218 Upper Battery Housing	1 ea.	17.33
40	510217 Lower Battery Housing	1 ea.	17.02
41	510219 Battery Support	1 ea.	19.40
42	510220 Lead Assembly w/Screw	1 ea.	10.12
43	510221 Actuator w/Washer, Screw, Springs	1 set	8.73
44	107513 Battery	1 ea.	999.00
45	107516 Battery Charger and Charger Cord	1 ea.	210.94
46	834678 Charger Cord	1 ea.	27.40