



**CERTIFIED  
BRONZE**



**CORDLESS**



**HIGH/LOW  
POWER  
SWITCH**



**LONG  
RUN TIME**

### \*Standard Configuration

14" Xover Floor Tool	3" Dust Brush
Telescoping Wand	17" Crevice Tool
5" Upholstery Tool	

### Related Products

107314	Intercept Micro® Filters, 10/pk (open collar)	\$22.58
107374	Intercept Micro Filters, 10/pk (closed collar)	28.59
107724	12Ah Replacement Battery	1,197.00
107516	Battery Charger	301.73

# ProTeam GoFree® Flex Pro II

**107644\* GoFree Flex Pro II 12Ah w/  
Xover Telescoping Wand Tool Kit D (107100) \$2,145**

With a high/low power switch, the GoFree Flex Pro II brings greater versatility and options to professional cleaners. By cleaning at a rate 30% faster than a corded backpack and 5x faster than an upright vacuum, the GoFree Flex Pro II will save time and money. Eliminate safety and tripping concerns when going cordless.



### Specifications

Weight:	17.5 lbs. / 7.9 kg.
Motor Airflow:	58 CFM (low)   65 CFM (high)
Static Lift:	67 in. (low)   81 in. (high)
Motor:	36 VDC / 240 W (low)   345 W (high)
Decibel:	63.9 dBA (low)   65.9 dBA (high)
Capacity:	6 qt. / 6.6 L
Battery:	Lithium Ion, 12Ah
ProLevel Filtration® w/Four Levels of Filtration:	1054 sq. in. total area
Approximate Runtime:	106 mins. (low)   75 mins. (high)
Approximate Full Charge Time:	3 hrs.
Minimum Charge Cycles:	1000

### \*\*ProLevel Filtration System with HEPA Media

Captures 99.7% at 0.3-0.5 microns per ASTM F3150

### Limited Warranty

- 3 years parts and labor, 2 years motor, battery and charger
- Limited lifetime on molded body parts

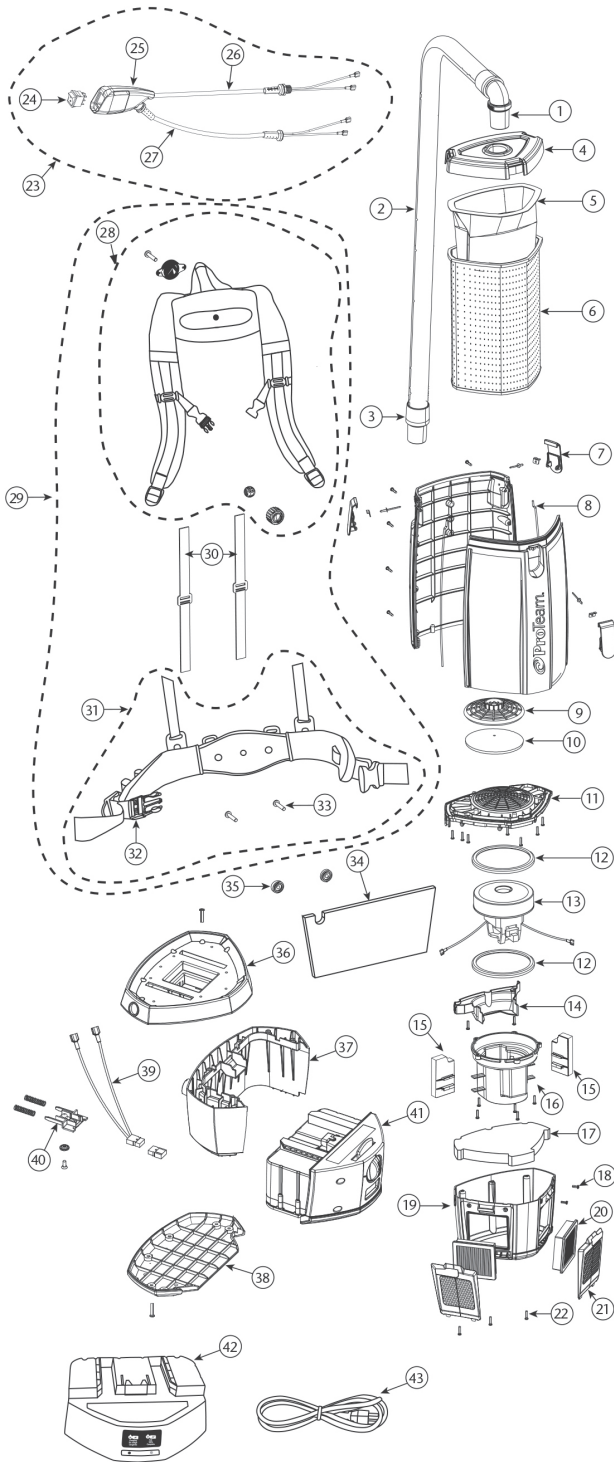
### Optional Configurations

107645	12Ah w/ProBlade® Carpet and Hard Surface Floor Tool Kit (107532)	\$2,210
107650	12Ah w/Xover Two-Piece Wand Tool Kit B (107098)	2,145
107681	12Ah w/Xover Telescoping Wand Kit and 101613 Tool (107100)	2,245
107796	12Ah w/Xover Performance Telescoping Wand Kit (107099)	2,145

**All vacuums purchased in kit configurations include battery and charger.**

\*\*The filtration value of ProTeam's ProLevel Filtration System in this vacuum is achieved by the use of a multi-stage filtration system, including intercept micro filter, micro cloth filter, plastic cage with foam filter, and post-motor filter made from HEPA media, as tested per ASTM F3150. Specification calculations are based on average motor performance.

# GOFREE FLEX PRO II PARTS



No.	Product Name	Qty	List Price
1	101928 Replacement Double Swivel Elbow Cuff 1½"	1 ea.	\$ 13.77
	102715 Replacement Double Swivel Elbow Cuff 1¼"	1 ea.	18.21
2	107648 48" Static-Dissipating Hose w/ Non-Replaceable Elbow and Straight Cuffs	1 ea.	41.57
	103237 56" Static-Dissipating Hose w/Cuffs (Black) 1¼"	1 ea.	39.73
3	100694 Replacement Double Swivel Straight Cuff	1 ea.	8.21
	103279 Replacement Swivel Cuff (Black) 1¼"	1 ea.	10.18
4	833948 Top Cap (Purple)	1 ea.	51.72
5	107314 Intercept Micro Filter (Open Collar)	10/pk	22.58
	107374 Intercept Micro Filter (Closed Collar)	10/pk	28.59
6	834072 Micro Cloth Filter	1 ea.	37.09
7	510179 Latch and Retainer w/Lock Nut & Screw	1 set	11.09
8	510181 Gasket for Tank	2 ea.	5.16
9	510183 Dome Filter w/Foam Media (includes: 10)	1 set	11.98
10	510184 Foam Filter Media for Dome Filter	1 ea.	3.65
11	510193 Upper Motor Support w/Gasket	1 set	11.13
12	510741 Motor Gasket (GFFP II only)	1 ea.	11.49
	840899 Motor Gasket (old)	1 ea.	9.73
13	510740 Motor/Fan (36VDC) w/Gasket (GFFP II only)	1 ea.	253.30
	510411 Motor/Fan (36VDC) w/Gasket (old)	1 ea.	222.88
14	510185 Cover Wire w/2 screws	1 set	3.92
15	510742 Left/Right Baffles	1 set	8.27
16	510194 Lower Motor Support (5 screws)	1 set	19.90
17	834042 Triangular Lower Foam Pad	1 ea.	4.43
18	808380-0 Screw Pan CR #8 x ½"	1 ea.	1.33
19	510216 Housing Assembly Lower w/Screws	1 set	23.68
20	107315 Exhaust Filter made from HEPA Media (2 pk)	1 set	17.54
21	841708 Exhaust Filter Door w/ Latch	1 ea.	10.61
22	808380-22 Screw Pan CR #8 x ¾"	1 ea.	1.63
23	843473 Switch Cord and Power Cord Assembly (includes: 24-27) (GFFP II only)	1 set	40.75
	834249 Switch Cord and Power Cord Assembly (includes: 24-27) (old)	1 set	84.57
24	105147 On/Off Switch	1 ea.	21.10
25	107043 Switch Box	1 set	26.74
26	843475 Switch Cord Assembly	1 set	10.18
27	841726 Battery Cord Assembly	1 set	14.14
28	840112 Upper Harness Assembly	1 set	107.03
29	840011 FlexFit Harness Assembly (includes: 28-37)	1 set	229.79
30	510192 Tensioning Straps	1 set	15.16
31	840114 Lower Harness Assembly (includes: 36, 37)	1 set	107.66
32	510301 Waist Belt Buckles and Straps Set	1 set	17.47
33	834051 5/16" - 18x1 - 3/8" Lock Screw (2 screws)	1 set	7.39
34	834043 Rectangular Upper Foam Pad	1 ea.	4.06
35	510186 Harness Spacers	2 ea.	4.70
36	510218 Upper Battery Housing	1 ea.	24.82
37	510217 Lower Battery Housing	1 ea.	24.38
38	510219 Battery Support	1 ea.	27.79
39	510220 Lead Assembly w/Screw	1 ea.	14.51
40	510221 Actuator w/Washer, Screw, Springs	1 set	12.52
41	107724 12Ah Battery	1 ea.	1,197.00
42	107516 Battery Charger and Charger Cord	1 set	301.73
43	834678 Charger Cord	1 ea.	40.10