

TROUBLESHOOTING GUIDE

Always read the Owner's Manual prior to use for safety instructions, usage tips, troubleshooting, and warranty information.

SAFETY

1. DO NOT use vacuum outdoors or on wet surfaces.
2. Violation of any of these instructions may void any and all warranties.
3. This vacuum is for **DRY RECOVERY ONLY**.

TROUBLESHOOTING

1. If exhaust that comes out of the bottom of the vacuum is warmer than usual, check and clean all four filters.
2. If loss of suction occurs, check the following:
 - a. That debris is not plugging the hose, wand, and/or floor tool.
 - b. Both Intercept Micro Filter and Micro Cloth Filters.
 - c. That the hose cuffs are fitting tightly on the hose and are not cracked.
 - d. That the cap is properly attached to the vacuum body.
 - e. That the Dome Filter hasn't shifted and is securely in place.
3. If the power cord is getting warm:

Check to see that the extension cord does not exceed a length of 50 feet at 16 gauge or 100 feet at 14 gauge. Longer cords will overheat and damage the vacuum.
4. If all efforts to rectify the situation have been met and you still have a problem, please call ProTeam Customer Service at (866) 888-2168. When you call please have ready your Bob Evans location, store number, and please have the vacuum with you.

PREVENTIVE MAINTENANCE

1. DO NOT tie extension cord and power cord together (Figure A).
2. Use genuine ProTeam Intercept Micro® Filters (Figure B).
3. Empty micro filter and inspect before each use.
4. Rinse, air dry, and re-insert the foam/filter diffuser each week (Figure D).
5. Wipe the inside and outside of the vacuum each week.

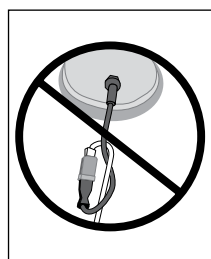


Figure A



Figure B

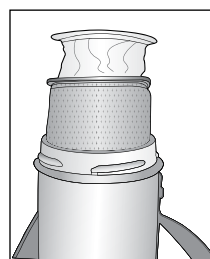


Figure C



Figure D

ELECTRICAL CORD CARE

1. NEVER stretch the cord tightly between the vacuum and the outlet. A cord that is stretched or pulled will not function properly and creates a danger.
2. After vacuuming, unplug the extension cord at both ends and wind it up loosely (Figure E). DO NOT wind the cord up by wrapping it around your hand and elbow.
3. Only a ProTeam replacement extension cord, or one that is properly sized for your application should be used, reference "Important Safety Instruction" in Owners Manual. Extension cord wire type is to be SJTW.
4. Manage the cord by leaving it coiled at the plug in location and using the cord holder located on the vacuum belt. While in use, hold the cord away from your body. Be careful not to walk on or vacuum over cord.

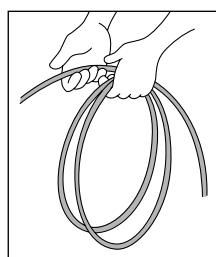


Figure E

FILTER RE-ORDER

For assistance with your product or to reorder ProTeam Intercept Micro Filters (#106995):

ProTeam Customer Service
9:30 am – 7:00 pm ET • 7:30 am – 5:00 MT
(866) 888-2168 phone • (800) 844-4995 FAX
customerservice.proteam@emerson.com

For technical assistance with your ProTeam vacuum, please have the vacuum with you when you call.

*This instruction sheet is a quick reference and DOES NOT replace the Owner's Manual.
See Owner's Manual for a complete list of safety, maintenance, product use instructions, and parts schematics.*

For technical assistance with your ProTeam vacuum, please have the vacuum with you when you call.