

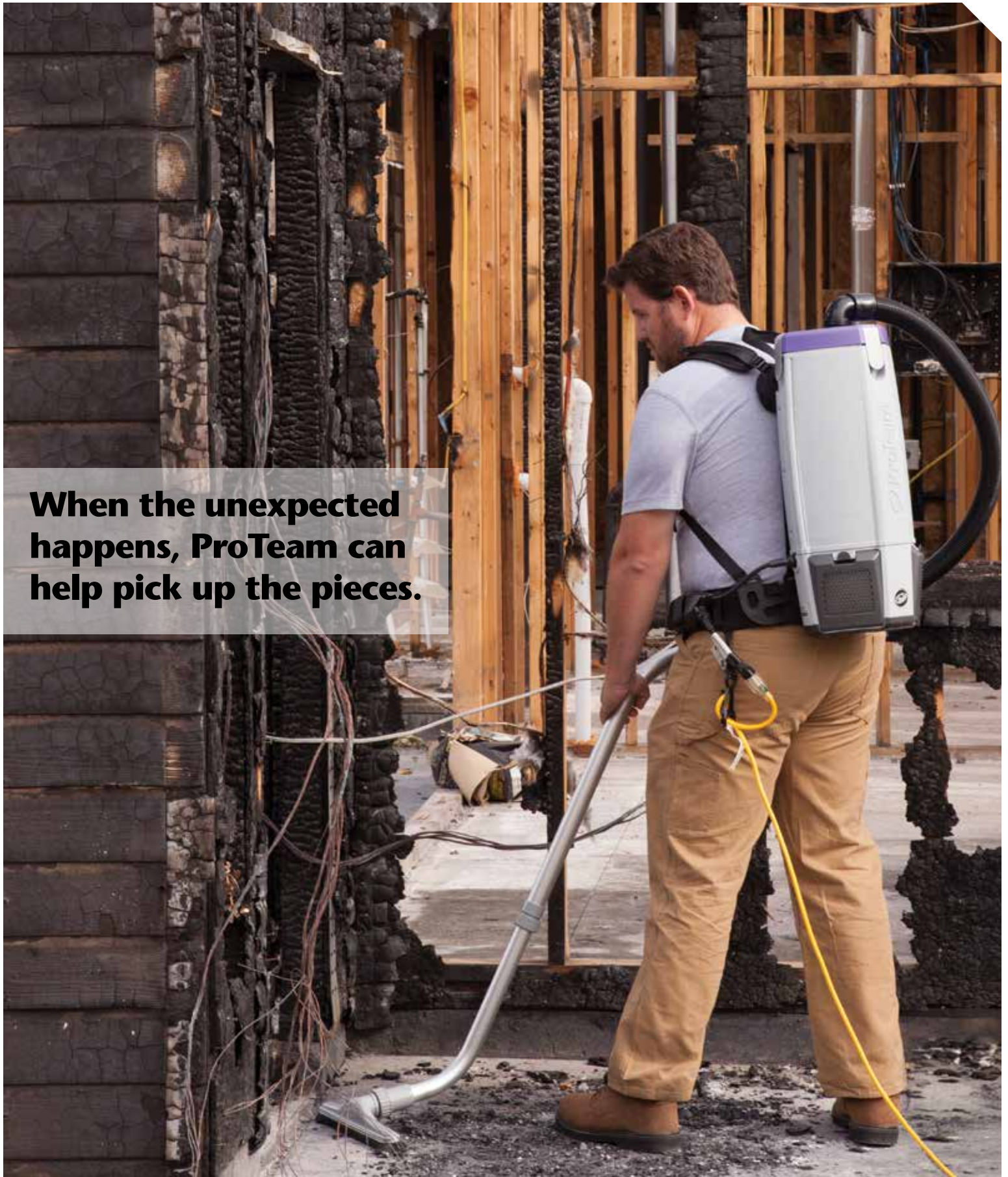


RESTORATION PROGRAM

MEETING CLEANING CHALLENGES WITH INCREASED EFFICIENCY

ProTeam
Cleaning for Health® Since 1987

When the unexpected happens, ProTeam can help pick up the pieces.





DETAIL FOCUSED

When disaster strikes and everyday life is disrupted - restoring a home and business quickly is important. Use professional equipment to restore a home or business - from water damage in the basement to fire and smoke damage elsewhere.

ProTeam vacuums provide powerful suction, large capacity and ProLevel™ Filtration with Four Level® Filtration to extract and eliminate more dust, dirt and allergens. This effective combination tackles large and small project work.

Vacuuming is the quickest, most efficient and cost effective

method for surface prep and post-installation clean up. Whether you are installing sub-flooring, hardwood, tile or stone, it is important to completely remove all dust and debris from your surface area for a clean finish.

When you have water damage in a home or business, there may be extensive damage to the property and possessions, as well as occupants health. It is important to act quickly! Have the right equipment on hand to respond to any challenge – big or small.

FACT: Between 2000 and 2012, natural disasters caused \$1.7 trillion in damage and affected 2.9 billion people.

Source: UNISDR (The United Nations Office for Disaster Risk Reduction)

Natural Disasters



Extreme, sudden events caused by environmental factors that injure people and damage property. Earthquakes, windstorms, floods, and disease all strike anywhere on earth, often without warning.

The **LineVacer** is ideal for applications when **clean air** in a controlled environment is **critical**.

Meets the EPA's definition of a HEPA vacuum under the Lead Safety Renovation, Repair and Painting Rule.

3 YEAR WARRANTY on motor, labor and parts.
LIFETIME WARRANTY on the body.
TO PROTECT YOUR INVESTMENT.

APPLICATIONS



Carpets & Subfloors



Extreme Weather Condition



EPA regulations



Emergency Spills



Jobsite Maintenance



Crawl Spaces & Attic

RECOMMENDED PRODUCTS

THE RIGHT TOOL FOR THE RIGHT JOB



SUPER COACH PRO®

- Fast and efficient
- Clean with less effort
- Versatile

LINEVACER®

- Meets EPA RRP Rule
- True-Sealed HEPA or ULPA

PROGEN®

- Quick & easy access to clogs
- Lightweight handle

RUNNINGVAC®

- More capacity than uprights
- Robust construction

PROGUARD® WET/DRY

- Handy for emergency spills
- Maneuverable
- Heavy duty

PROBLITZ® AIRMOVER

- Low amp draw
- Maximum airflow
- 3 speeds & positions

PREVENT PERMANENT DAMAGE TO FLOORING

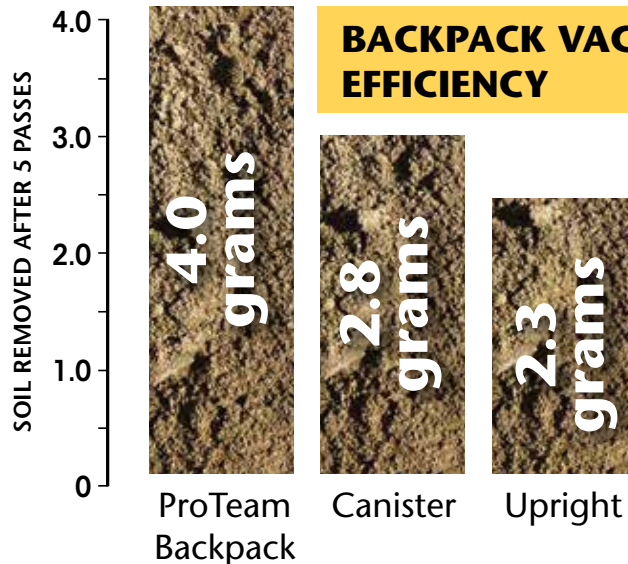
With 3 fan speeds and 3 operating positions, the ProBlitz AirMover dries carpets and subfloors quickly with the ultimate quiet performance.



- **Easy Transport** – Optional telescoping handle and wheels (ProBlitz XP only)
- **Flexibility** – Three operating positions to direct air where you need it
- **Stackable** – Convenient storage
- **Low Amp Draw** – Multiple units on a single circuit
- **Quiet** – Operate without disruption
- **Reduce Re-soiling** – High-speed drying after wet extraction



ProGuard Wet/Dry vacuums deliver unmatched power, performance and durability and include thoughtful features that make our vacuums easier and more convenient to use.



BACKPACK VACUUM CLEANER EFFICIENCY

INDIVIDUAL TOOLS A VAST ARRAY TO MEET YOUR NEEDS



#100110 Dust Brush



#100108 Crevice Tool



#100614 Horse Hair Brush Floor Tool



#100155 Gulper Aluminum Floor Tool

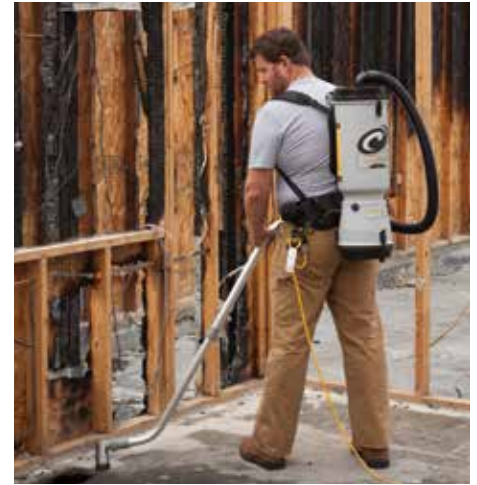
In 5 passes, the ProTeam backpack vacuum is:

- **43%** more efficient than a commercial upright vacuum.
- **30%** more efficient than a canister in removing soil.

Source – Quality Environmental Services & Technologies, 1996; APC Filtration, Inc., 1996; An Evaluation of ProTeam's QuarterVac and CoachVac in a School Environment, Dr. Eric Brown, Cleaning Research International, UK, 1994



RESTORE WITH PROTEAM



Proof Positive

Chris Langdon, President of Complete Restoration Services

"Our restoration business is about 80 percent water damage, 10 percent mold, and 10 percent fire. We use ProTeam backpack vacuums on all of our jobs."

"Our goal is to be the cleanest restoration company in town, so we vacuum the jobsite at the end of every day. The customers are so impressed at how the job looks from beginning to end."

"It's unusual in the restoration industry to have staff that sticks around for a few years and enjoys what they do, but we actually have really low turnover. We buy our employees the best equipment and give them the best training. Giving them the right tools makes their jobs easier and keeps them happy."

"I've been in restoration work for 11 years. We used ProTeam backpacks at every company I've ever been with. Tools are everything. If you don't have the right tool, the job isn't going to get done right. You have to have all the right tools before you start the job."

"HEPA filtration is important, especially on the mold jobs. It does a remarkable job capturing all the spores. When we are tested by an independent third party, they refer to us as one of the cleanest job sites they've every seen."

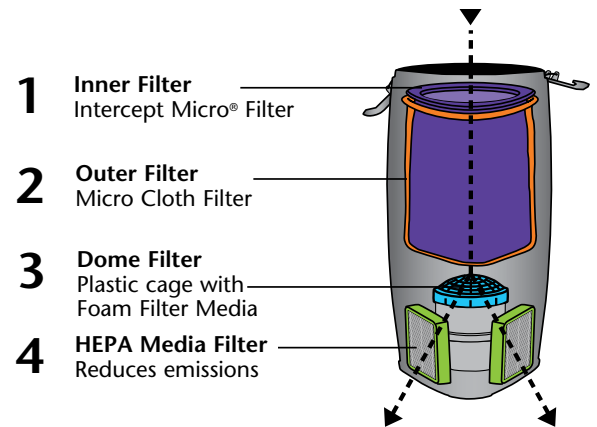
Chad Wetzel, Mitigation Manager of Complete Restoration Services

"The ProTeam backpack vacuums are easy to use, convenient, and actually really comfortable. You don't have to worry about dust going everywhere."

EFFICIENCY

ProTeam's Unique Suction Cleaning Method:

- **CLEAN CARPET & HARD SURFACES** - Without stirring up dust.
- **AIR STAYS CLEANER** - Reducing the need to dust as often.
- **LOW DECIBEL LEVELS** - Reduce noise pollution.



FACT

ProTeam's exclusive filtration systems capture particulates and pollutants both visible *and* microscopic that can harm health and trigger asthma or allergies.



ProTeam, Intercept Micro, Cleaning for Health, ProLevel Four Level, Super Coach Pro, LineVac, RunningVac, ProBlitz, and ProGuard are trademarks of ProTeam, Inc. © 2014-2017 ProTeam, Inc. All rights reserved.



We Support Healthy Air | Lung.org
The American Lung Association does not endorse product, device or service.



866.888.2168 proteam.emerson.com
customerservice.proteam@emerson.com